

THE ECONOMIC IMPACT OF CO-OPERATIVES IN ONTARIO

WHAT IS A CO-OP?

Co-operatives are community-focussed businesses that balance people, planet and profit. They are formed to seize local opportunities or respond to local challenges.

Co-operatives are democratic, value-based, and member-focussed. As a trusted place to do business, co-ops are chosen by more than 1 in 7 people worldwide. Twice as many co-ops remain in operation after ten years as other types of business enterprise.

Ontario's co-ops: fast facts

49,000
VOLUNTEERS

♠ = 1,000



OLDEST
CO-OPS



Vineland Growers
CO-OPERATIVE
(November 20, 1913)

and

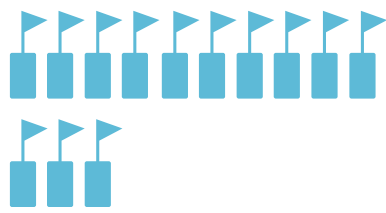


Guelph Campus
CO-OPERATIVE*
(November 27, 1913)

* also the oldest student housing co-op in Canada

1,300
CO-OPS
in Ontario
(estimated)

♠ = 100



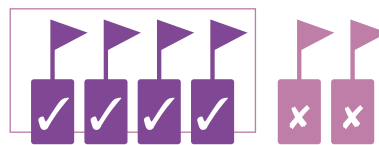
10,000
of which are
BOARD MEMBERS

ONE IN FOUR



1/4
of Ontario's population is a member of a co-operative (more than 3 million co-op members)

LONG-LASTING



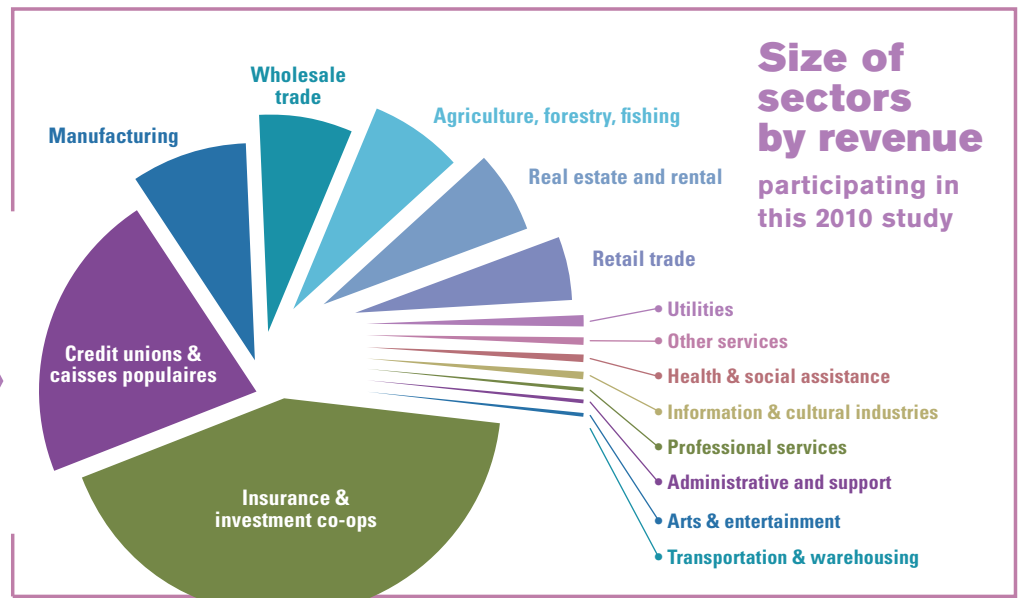
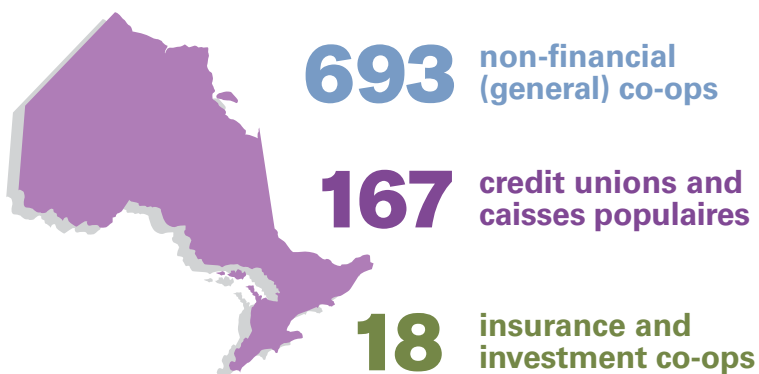
TWICE as many co-ops remain in business **after 10 years** as other business enterprises

TRUSTED

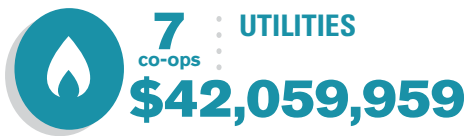


More than **2 OUT OF 3** Canadians agree that co-ops are a trusted place to do business

Participating in this 2010 study

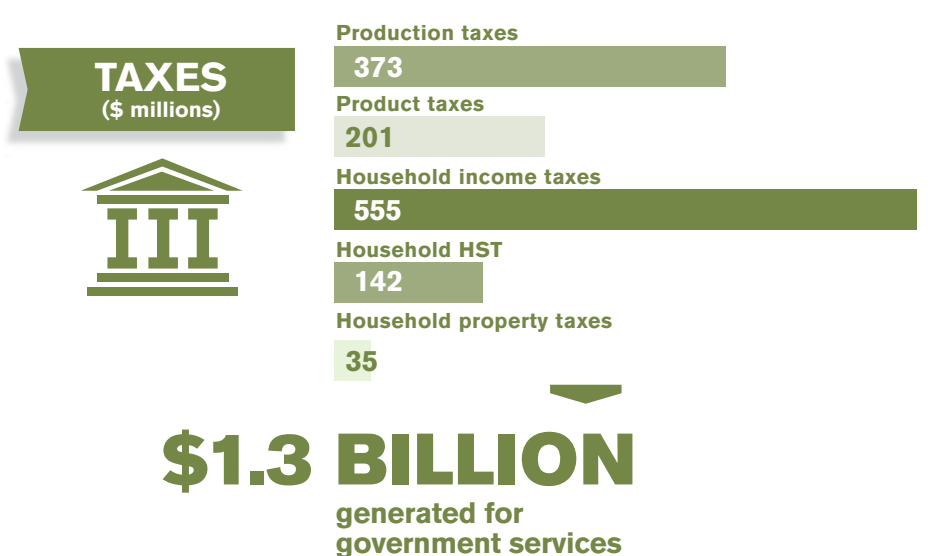
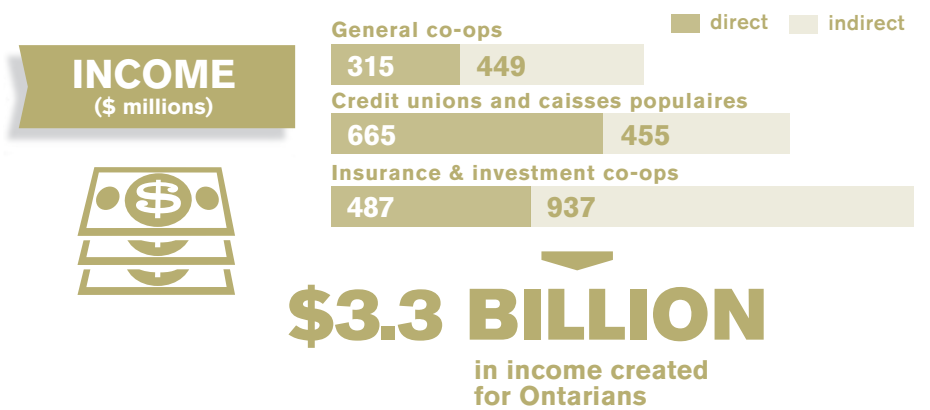
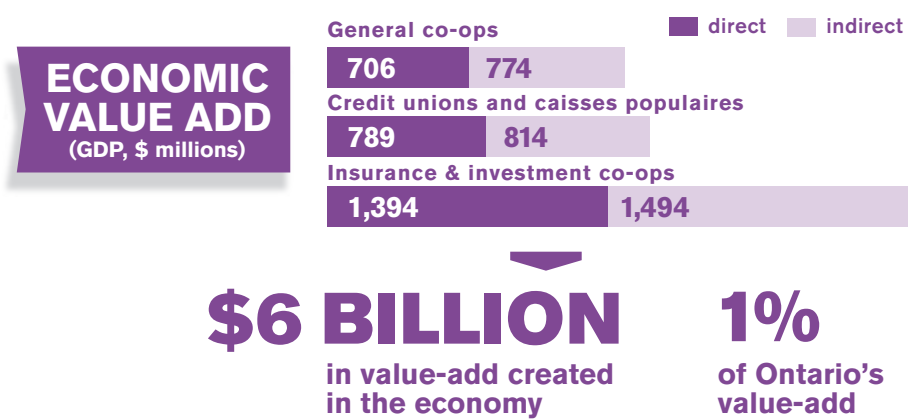
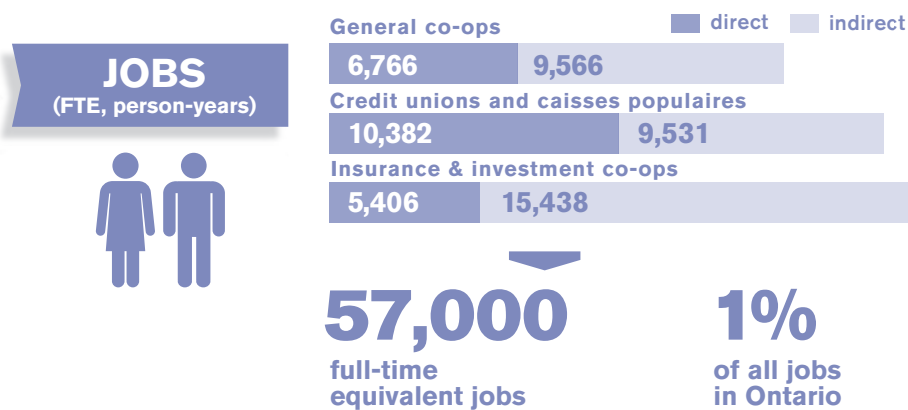


Ontario's top-earning co-operative sectors*



* revenues earned, 2010

The direct and indirect impact of co-operatives



For the full report, visit ontario.coop

Funding for this research provided in part by the Government of Ontario in collaboration with the Canadian CED Network, with support from the Ontario Co-operative Association. The views expressed in this publication are of the researchers and the Ontario Co-operative Association and do not necessarily reflect those of the Province.



Ontario
 Co-operative
 Association

FOR MORE INFORMATION, CONTACT

Ontario Co-operative Association
 30 Douglas Street
 Guelph ON N1H 2S9

Phone: 519.763.8271
info@ontario.coop
ontario.coop